

# Device Upkeep And Cleaning Guidebook



Study Material  
Crave Interactive

# CRAVE TABLET AND DOCKING STATION CLEANING GUIDANCE

It is important that Crave in-room tablets and docking stations are thoroughly cleaned as part of the housekeeping standard operating procedures, and especially after each guest checks out.

The tablets and docking stations should only be cleaned using the following products. Manufacturer's instructions and recommendations should be adhered to.

## Cleaning Product Recommendations

### 1. Antibacterial soap in water solution

Antibacterial (virucidal) soap products are suitable for use, in particular those that are marked as COVID-19 effective. Please ensure that you follow manufacturers recommendations for dilution.

### 2. Antibacterial surface wipes

There are COVID-19 effective antibacterial (virucidal) wipes available.

### 3. Alcohol wipes

Most alcohol wipes can also be used. Please do not select products with higher than 70% alcohol as it might cause deterioration of the tablet surfaces over prolonged period of use.

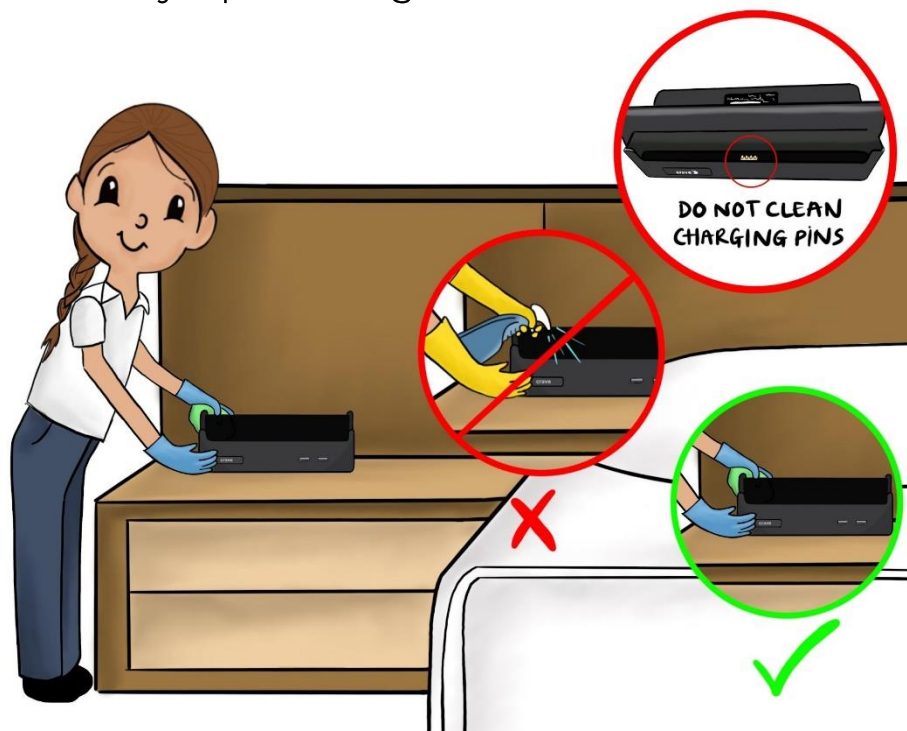
### 4. Microfiber cloths

A damp Microfiber cloth should be used to apply the cleaning solution to the hardware (if required), and a dry Microfiber cloth to remove any residual moisture or smears following cleaning.

## Cleaning Product Recommendations

Tablets and docking stations should be cleaned as part of the normal housekeeping process.

1. Remove the tablet from the docking station.
2. Clean the tablet display and protective cover thoroughly from all sides.  
Please note that it is not necessary to remove the tablet from the protective cover.
3. Wipe the tablet with a dry microfiber cloth to remove any residual moisture or smears.
4. If practical, please unplug the docking station from the power source.
5. Clean all sides of the docking station ensuring that particular care is taken not to damage the charging pins or USB slots. Please note the charging pins do not need cleaning, as it is highly unlikely that they will have been touched by a previous guest.



6. Wipe the docking station with a dry microfiber cloth to remove any residual moisture or smears.
7. Replace the tablet in the docking station, reconnect the power supply (if required). The tablet should now be receiving charge from the docking station as indicated by the battery symbol at the bottom right of the display.

**Caution:** please take extra care to ensure liquids do not enter any apertures as this may result in damage to the hardware or personal harm.

## Cleaning Product Recommendations

**Do not spray any liquids or chemicals directly onto the tablet or docking stations,** as this may cause damage to the screen and allow moisture to enter the hardware.

**Do not use abrasive cloths, paper towels** or similar items that may scratch or damage the screen and inhibit future functionality.

**Do not use aerosol sprays, bleaches or other chemicals** that are not approved for use of electronic equipment.

